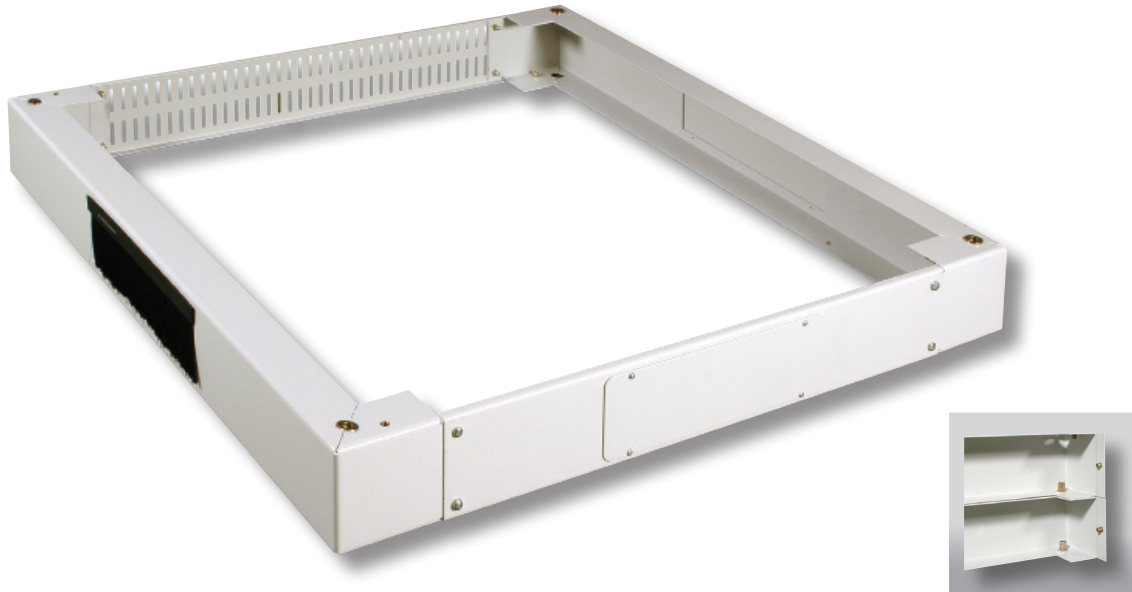


# DATASHEET

Socket for Network Cabinets

Art.-No.: 6917xx



## Specifications

- Side- and rear elements with pre-punched openings for cable entry
- Front panel perforated
- Easy installation to the network cabinet with supplied screws M6 x 8 mm bolts (supplied)
- Material: steel sheet
- Paint finish: RAL7035 (light grey), RAL9005 (deep-black)
- Increase of height to 200 mm possible by stacking of two sockets (M10 x 20 screws not included)
- Scope of delivery: Socket, 1 x brush terminal, mounting accessories

## Sizes

Art.-No.	Width	Height	Depth	Weight
691750	600 mm	100 mm	600 mm	5.6 kg
691751	600 mm	100 mm	800 mm	6.8 kg
691753	600 mm	100 mm	900 mm	7.5 kg
691747	800 mm	100 mm	600 mm	5.8 kg
691752	800 mm	100 mm	800 mm	7.4 kg
691748	800 mm	100 mm	900 mm	8.6 kg
691749	800 mm	100 mm	1000 mm	8.8 kg
<b>RAL9005, deep-black</b>				
691752TS	800 mm	100 mm	800 mm	7.4 kg

## Order data

Art. No.	Type
6917xx	Socket for Network Cabinets



Art.No.	6917xx	File	6917xx._NEU.indd		
Description	Socket for Network Cabinets				
Created	Date	Last revision	Date	Proved	Date
Frederik Dotzki	23.09.2013	BT	08.01.2014	BT	08.01.2013